



---

**CESEP ASBL**

---

**CENTRE FOR EUROPEAN SOCIAL  
AND ECONOMIC POLICY**

Rue de la Pacification, 65  
B-1000 BRUXELLES

E-Mail : [cesep@skynet.be](mailto:cesep@skynet.be)

Website: [www.cesep.eu](http://www.cesep.eu)

# **INDICATORS OF DISABILITY EQUALITY IN EUROPE**

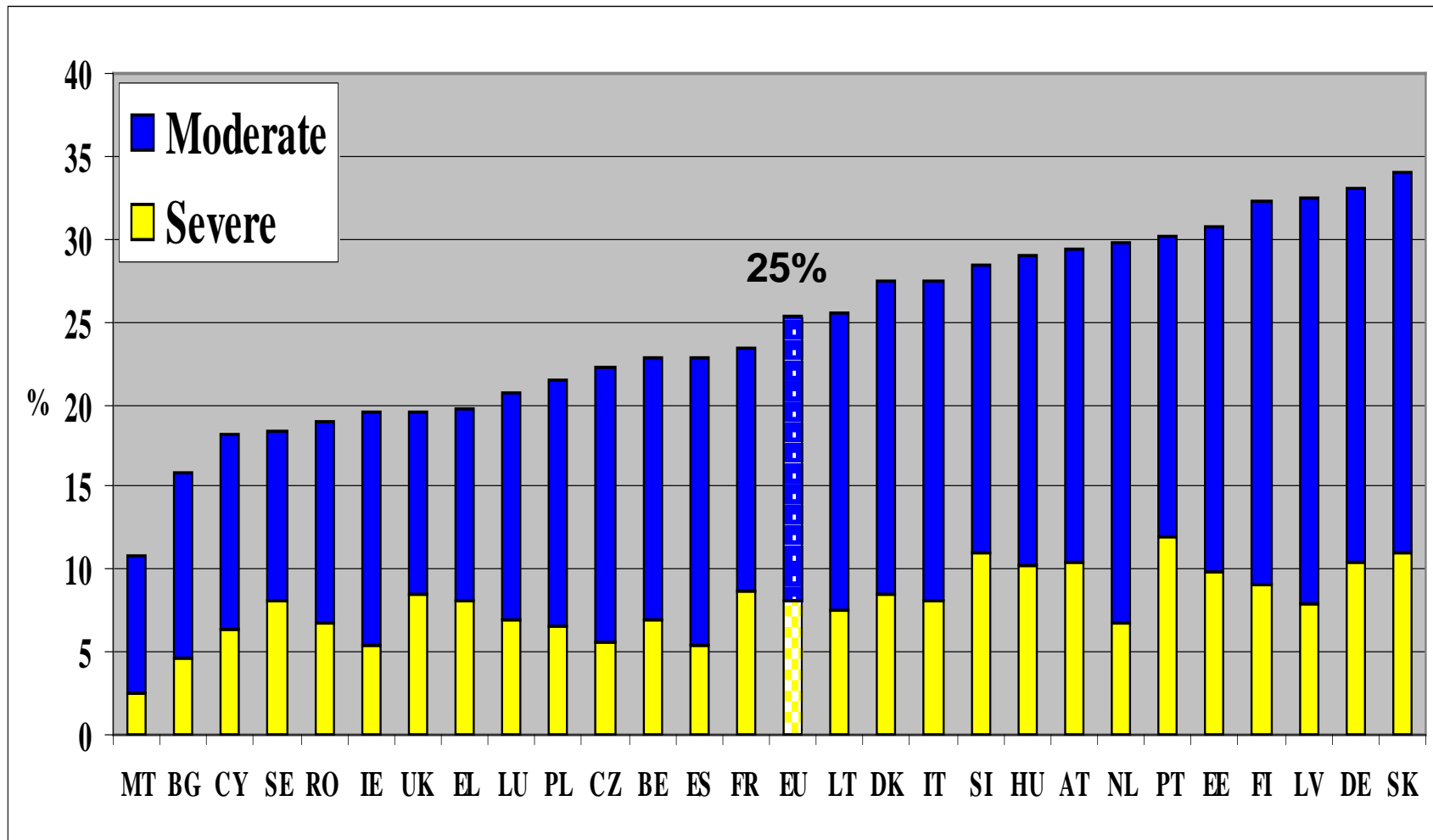
*Comparative data on a selection of quantitative implementation indicators*

December 2010

**FOR  
Academic Network of European Disability Experts  
ANED**

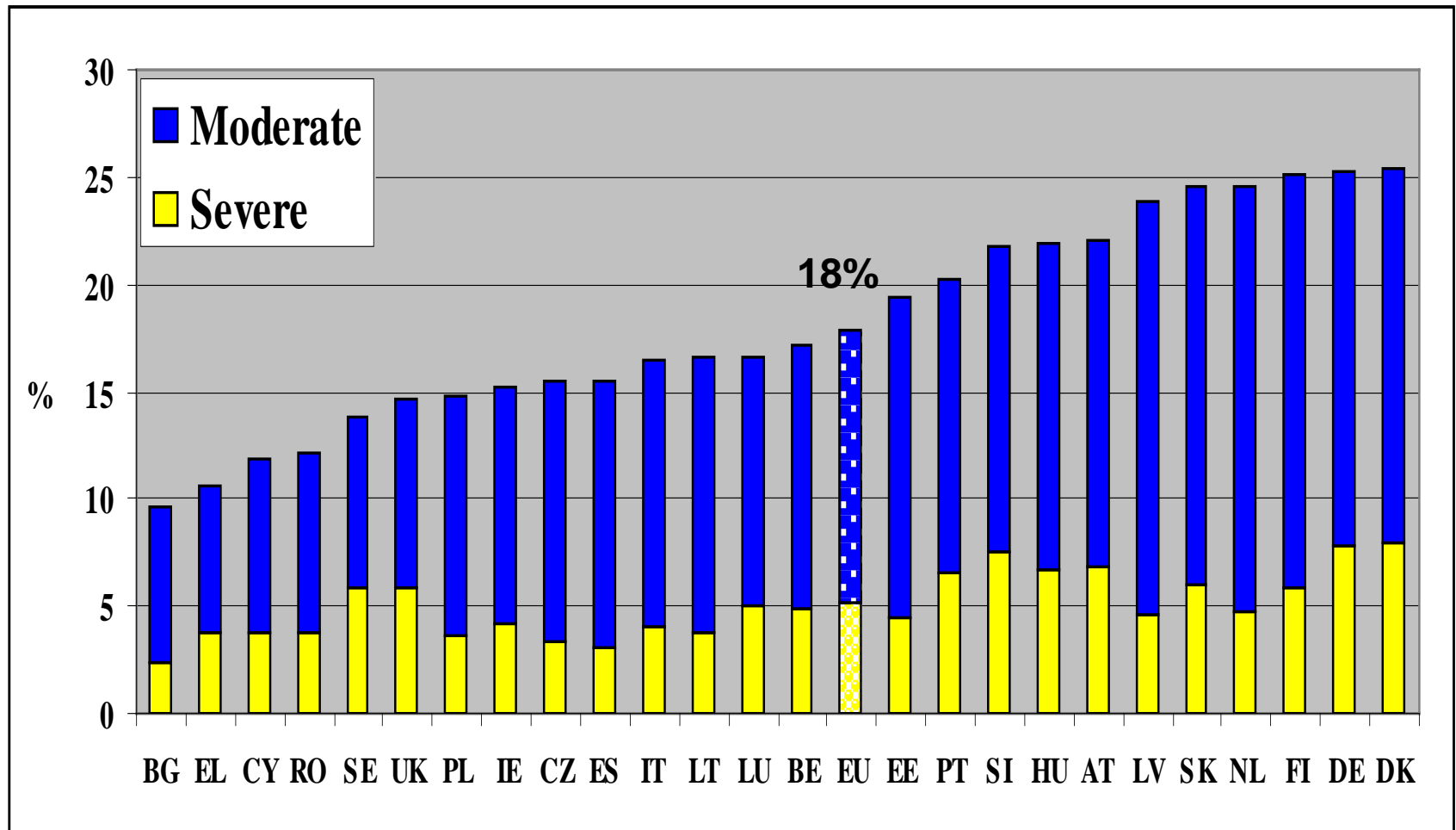
# NUMBER OF PEOPLE WITH DISABILITIES

% of the same age group. Age 16+



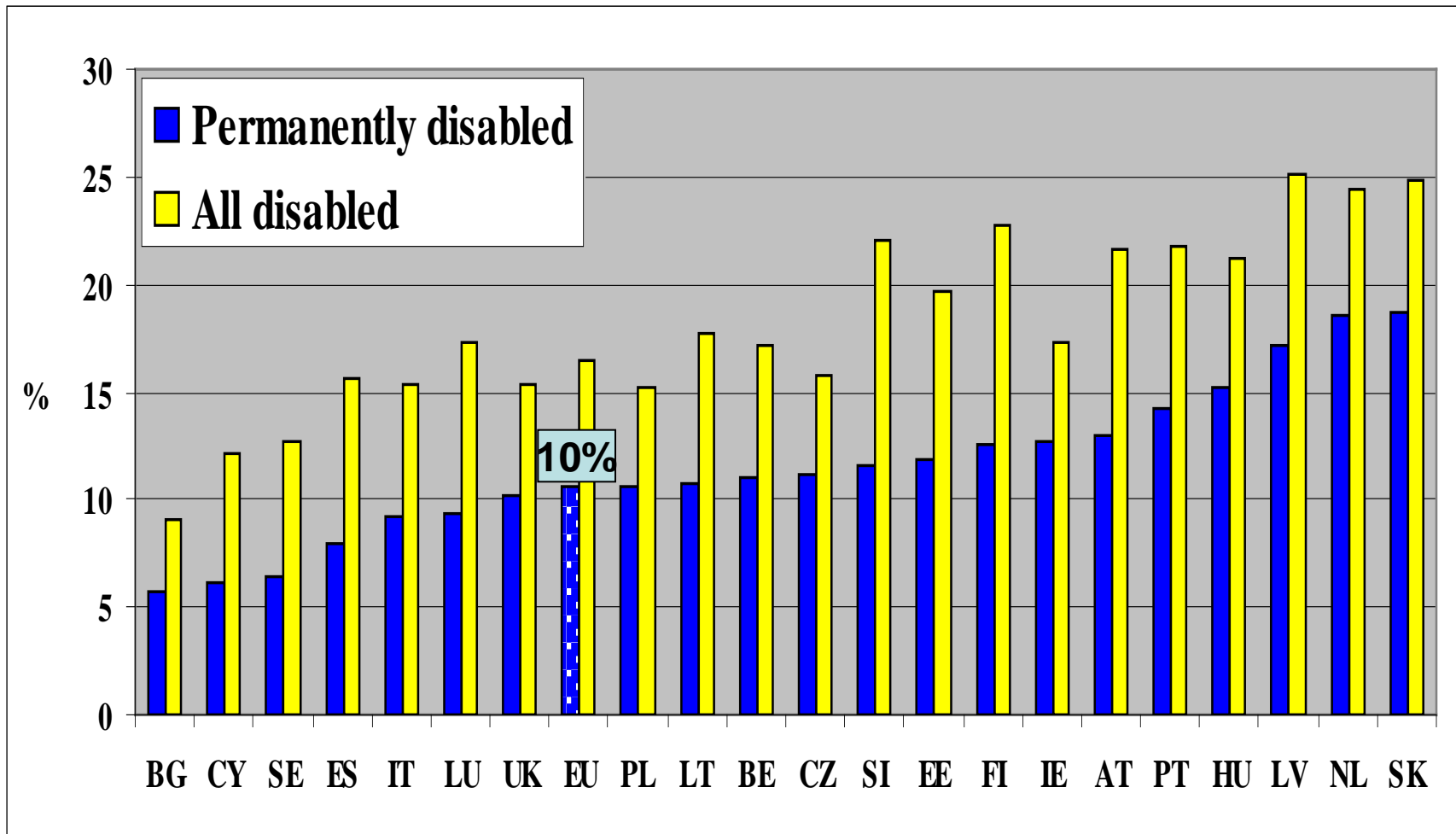
# NUMBER OF PEOPLE WITH DISABILITIES

% of the same age group. Age 16-64



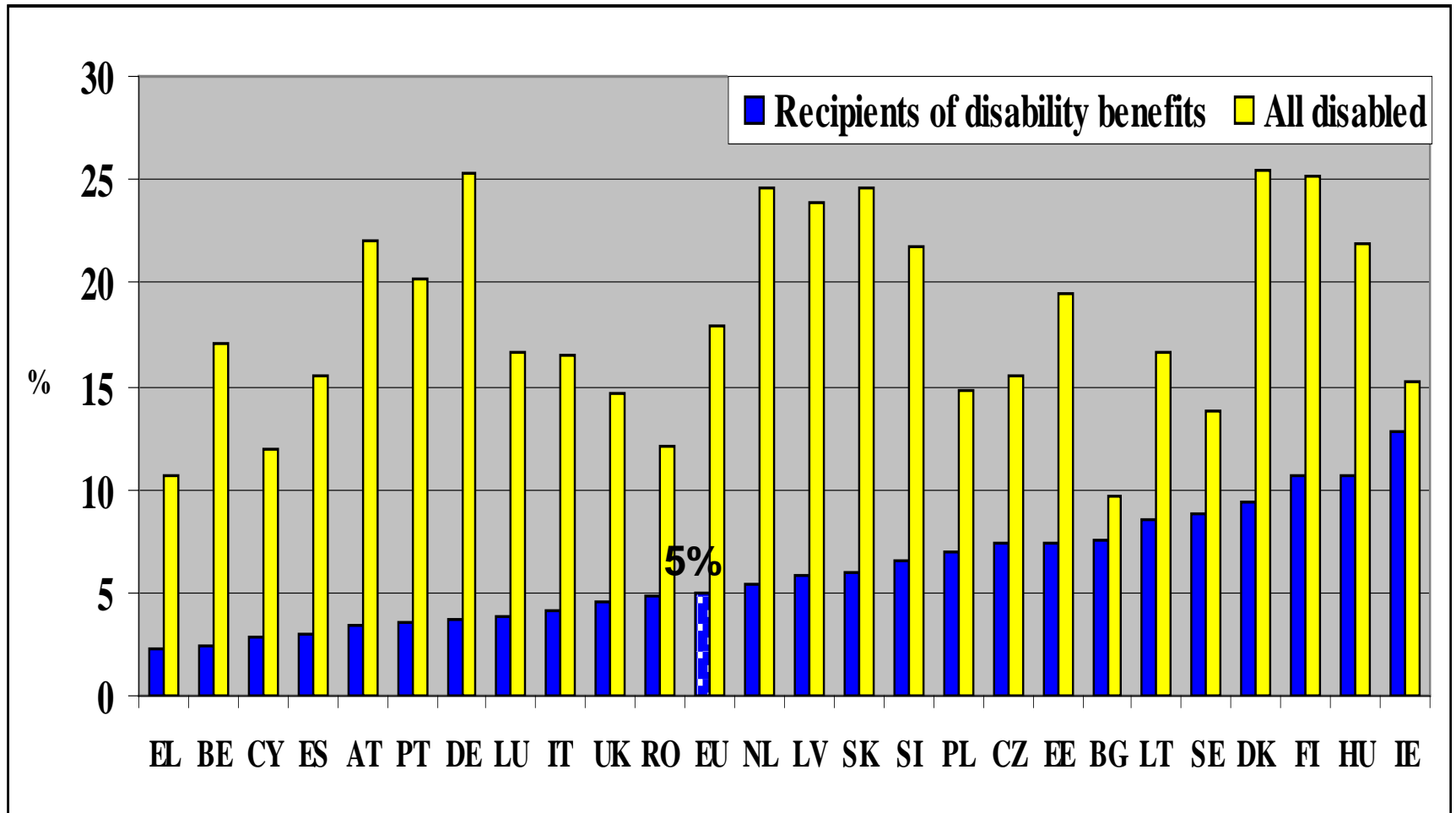
# NUMBER OF PEOPLE PERMANENTLY DISABLED

% of the same age group. Age 16-64



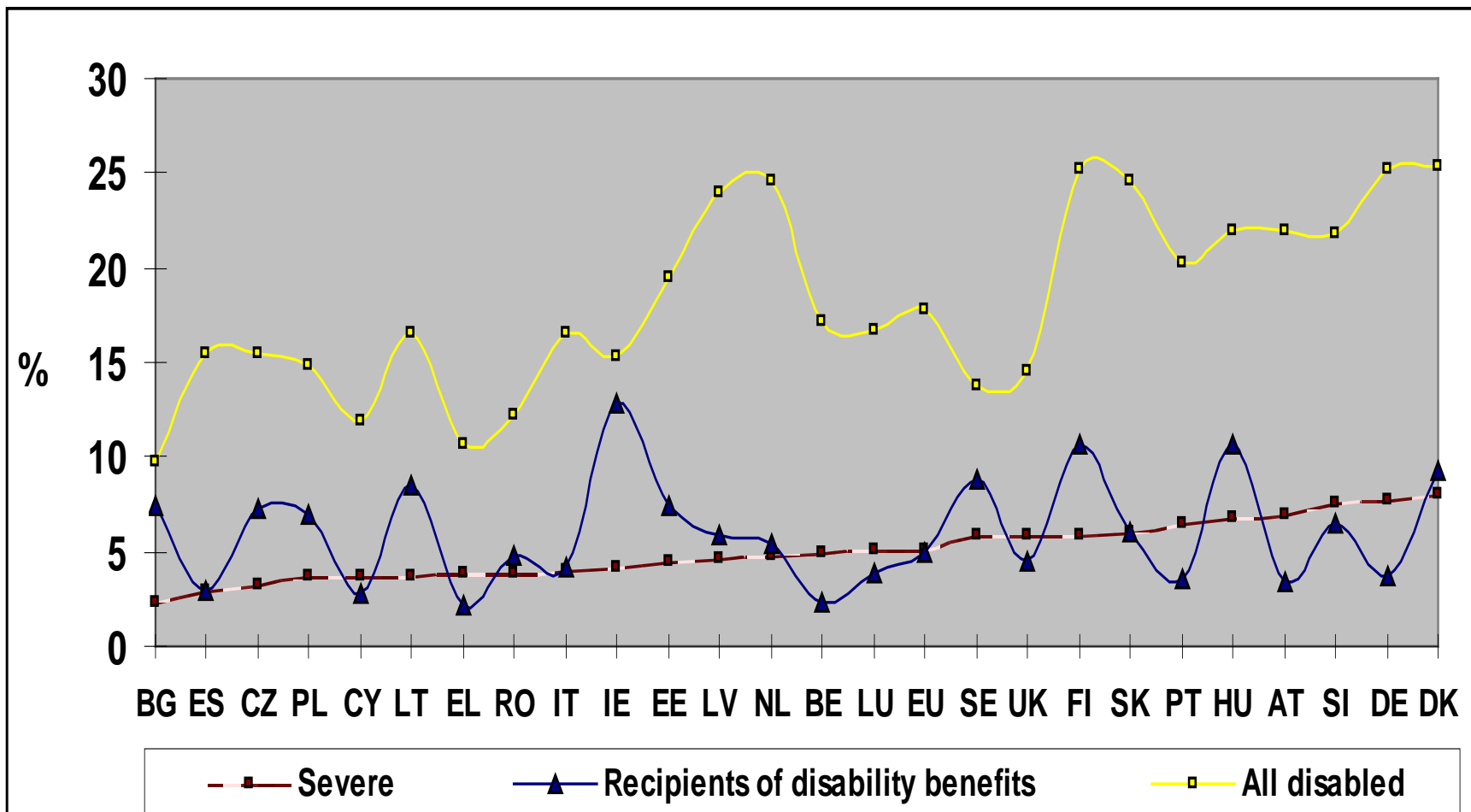
# NUMBER OF RECIPIENTS OF DISABILITY BENEFITS

% of the same age group. Age 16-64



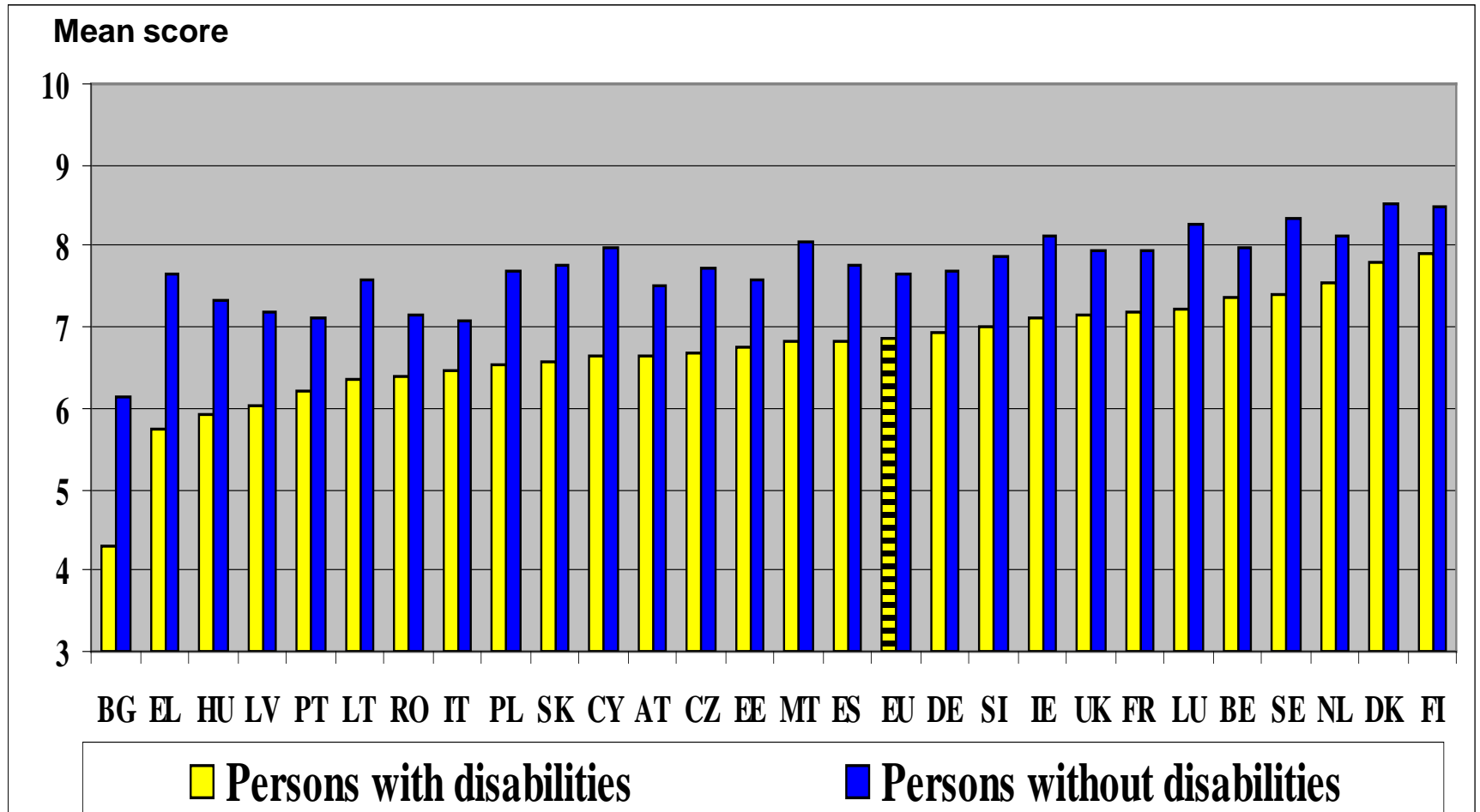
# SEVERITY, RECIPIENCY & DISABILITY

% of the same age group. Age 16-64



# HOW HAPPY WOULD YOU SAY YOU ARE?

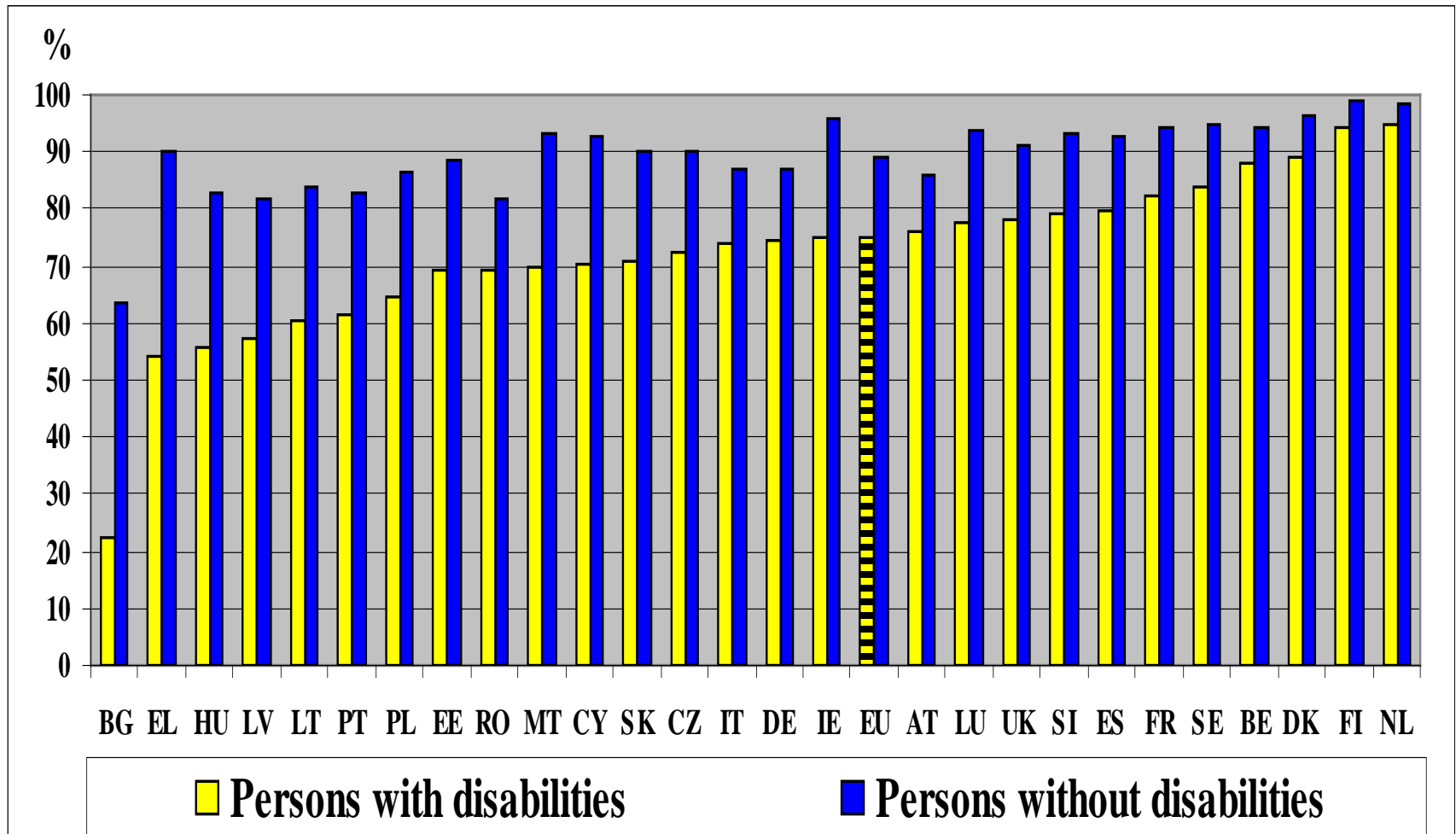
Use a scale from 1 to 10. Age 18+





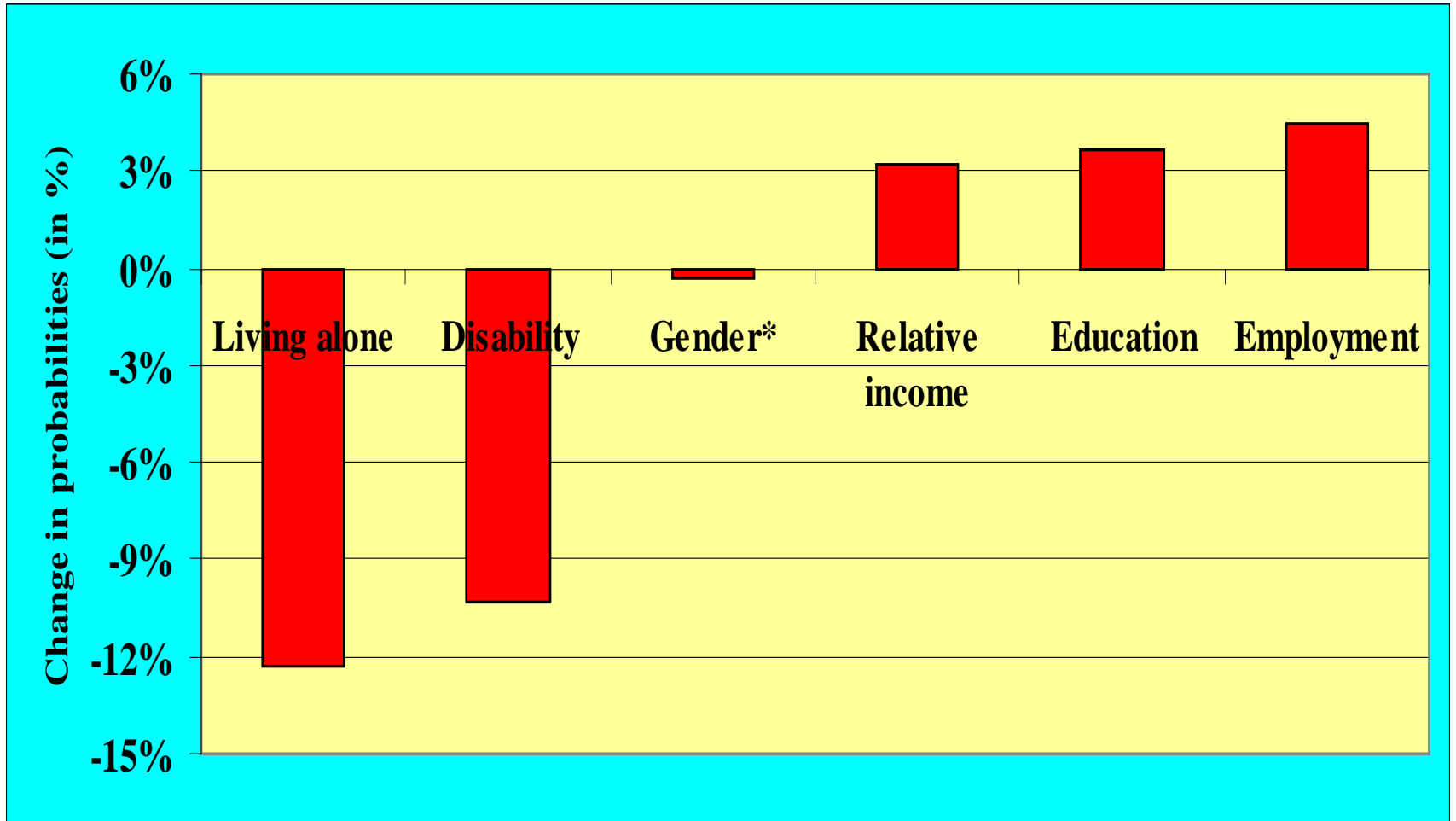
# HOW HAPPY WOULD YOU SAY YOU ARE?

% with score from 6 to 10. Age 18+



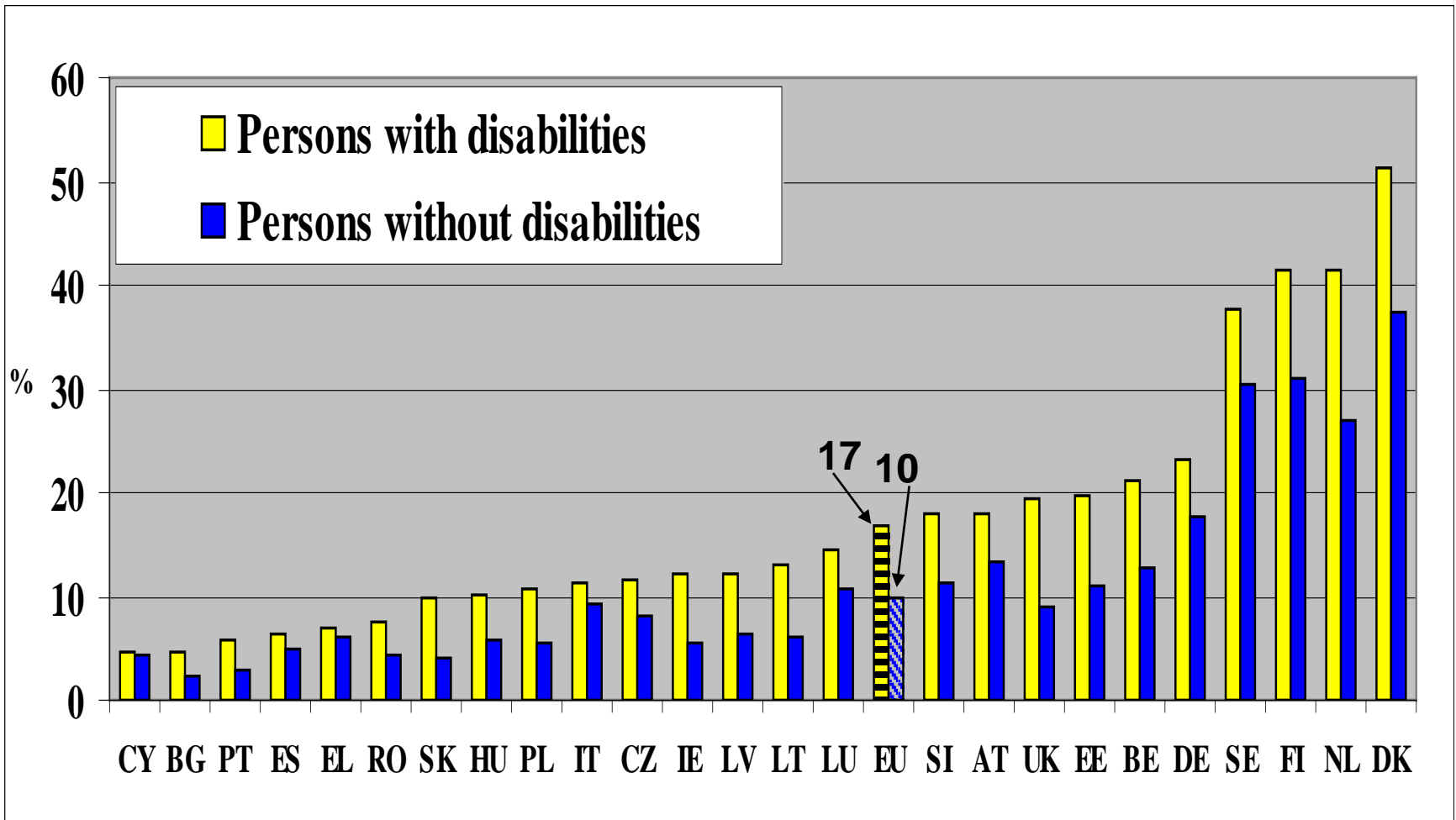
# PROBABILTY CHANGE TO DECLARE 'HAPPY'

Probability to pass from score (1-5) to (6-10). Age 18+



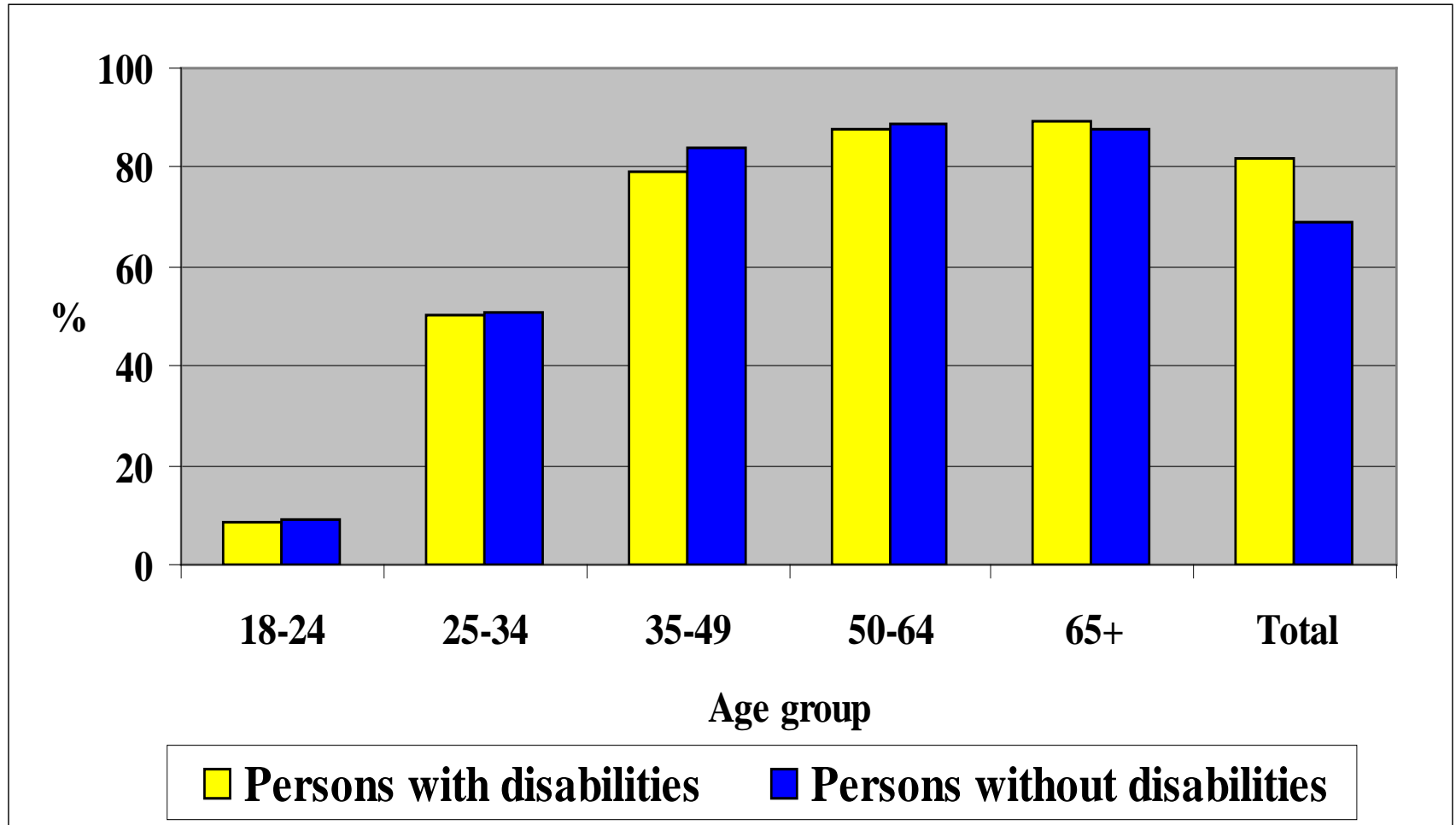
# PEOPLE LIVING ALONE

Percent of people who live alone. Age 16-64



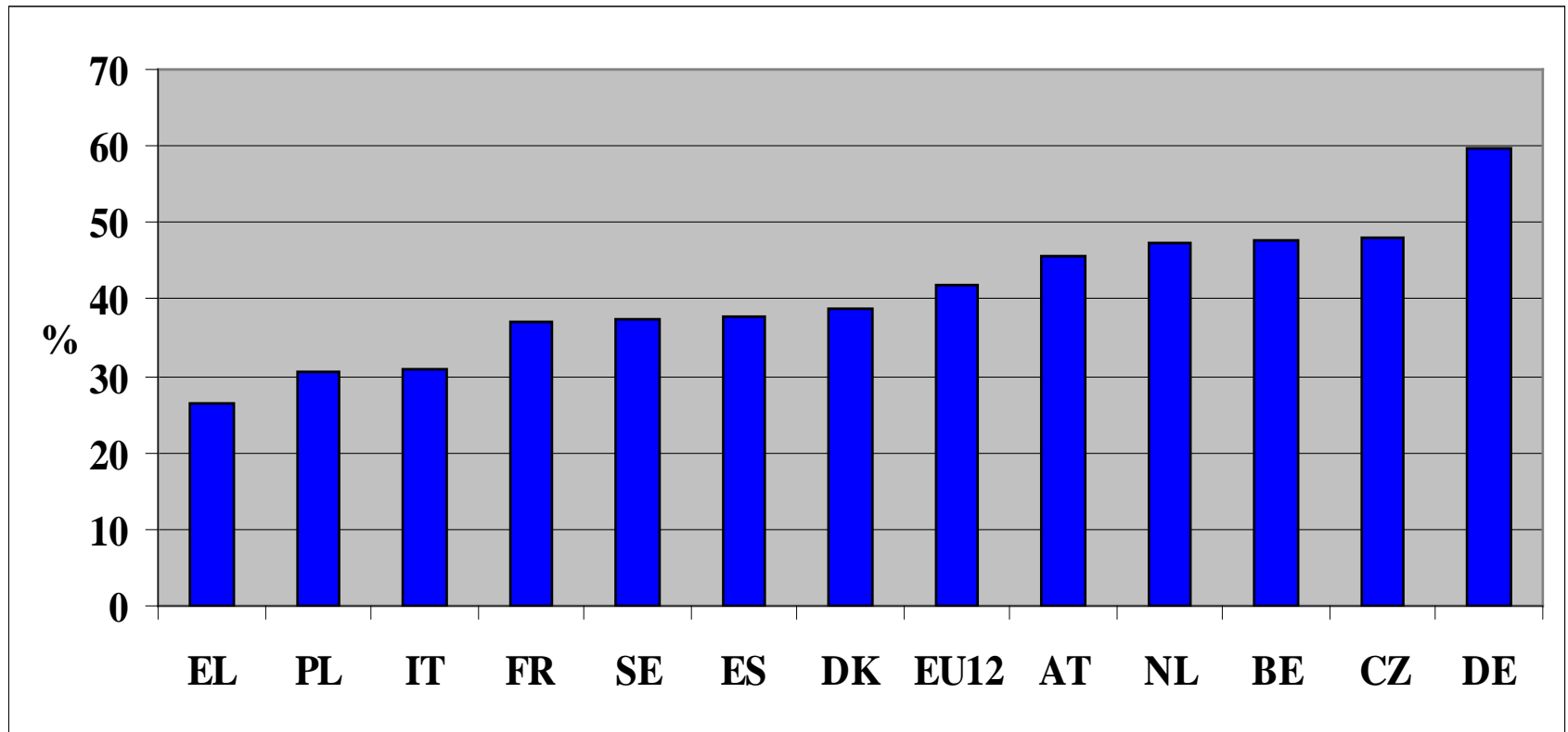
# PERSONS WHO ARE PARENTS

## Percent of persons who are parents; EU



## ENOUGH HELP WITH PERSONAL ASSISTANCE

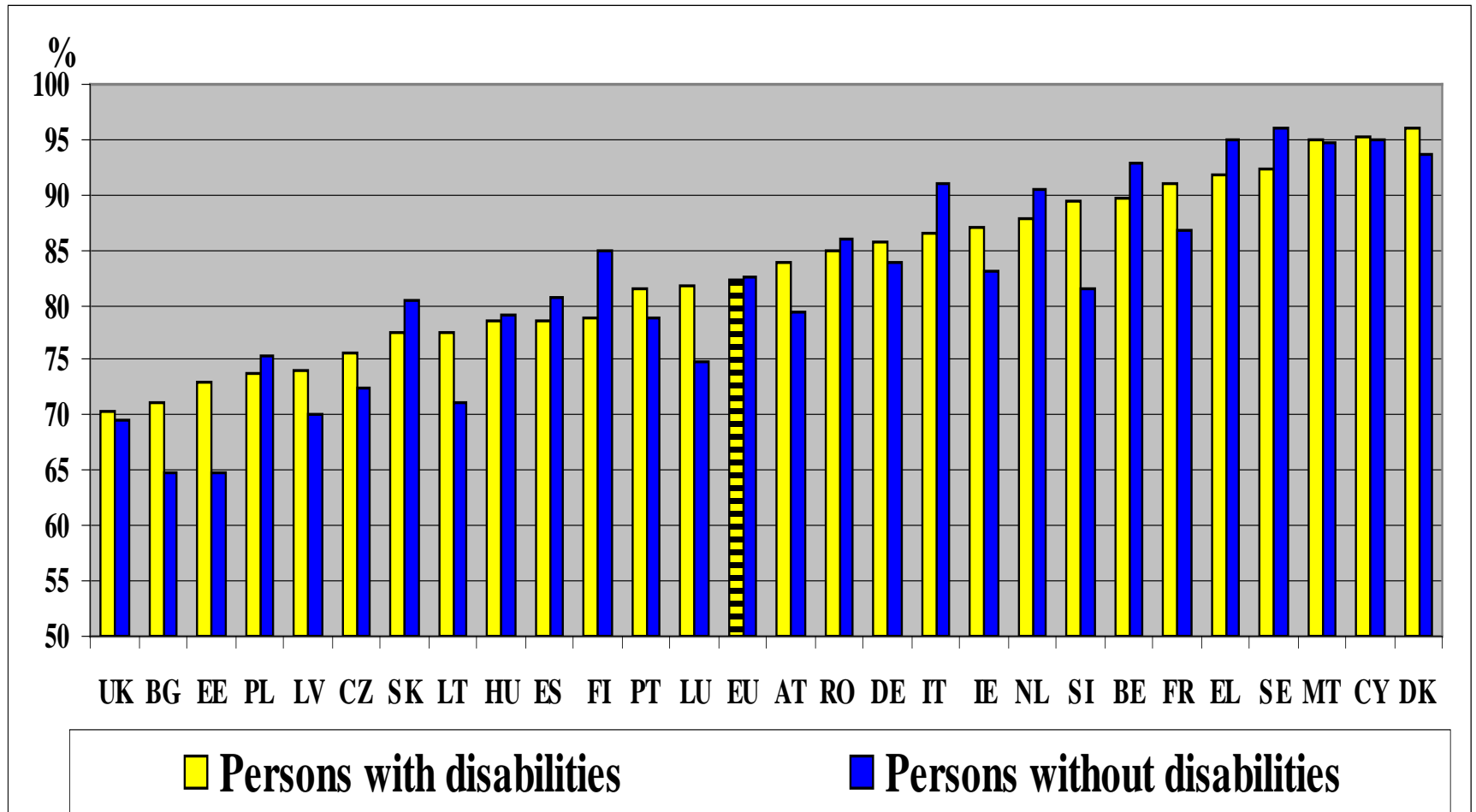
% of disabled 50+ declaring: Help meets needs 'All the time' or 'Usually'



Disabled people: people with Mobility problems, ADLs and/or IADLs

# PARTICIPATION IN NATIONAL ELECTIONS

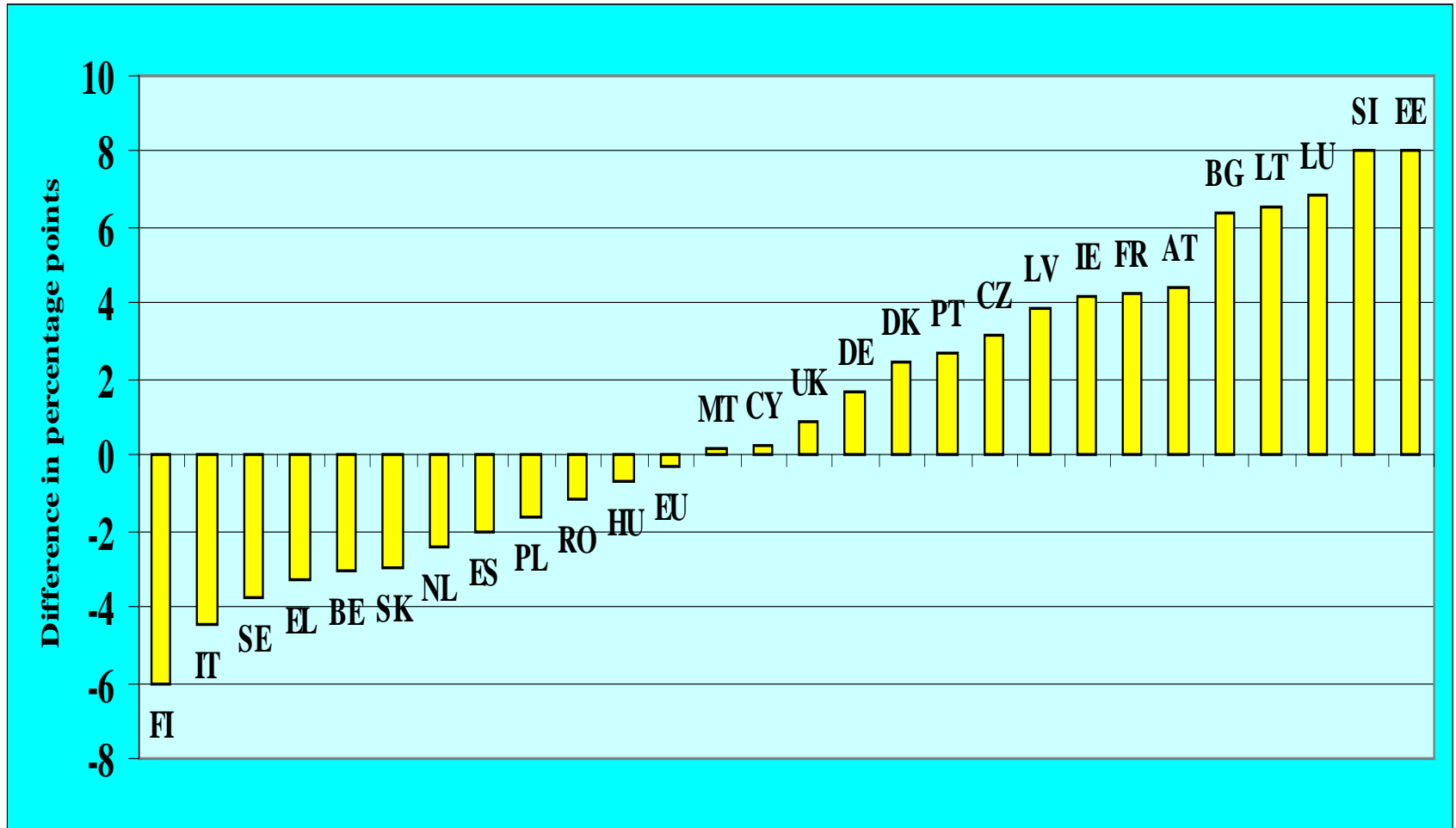
% who voted in national elections. Age: 18+



Significant national differences: see next

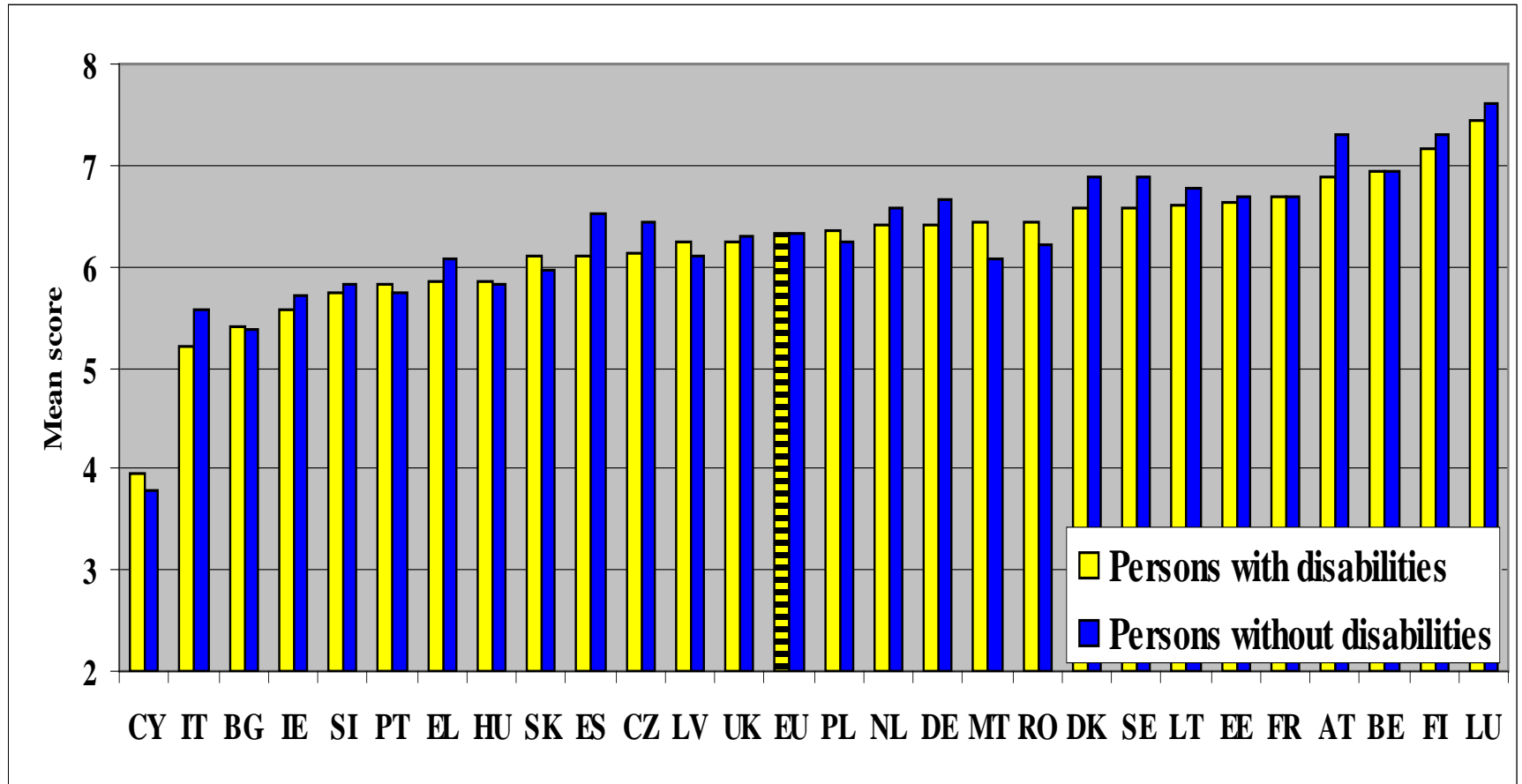
# VOTED IN NATIONAL ELECTIONS

Percentage points differences between disabled and non-disabled. 18+



# PERCEIVED QUALITY OF PUBLIC TRANSPORT

Mean score (score varies from 1 to 10). Age: 18+

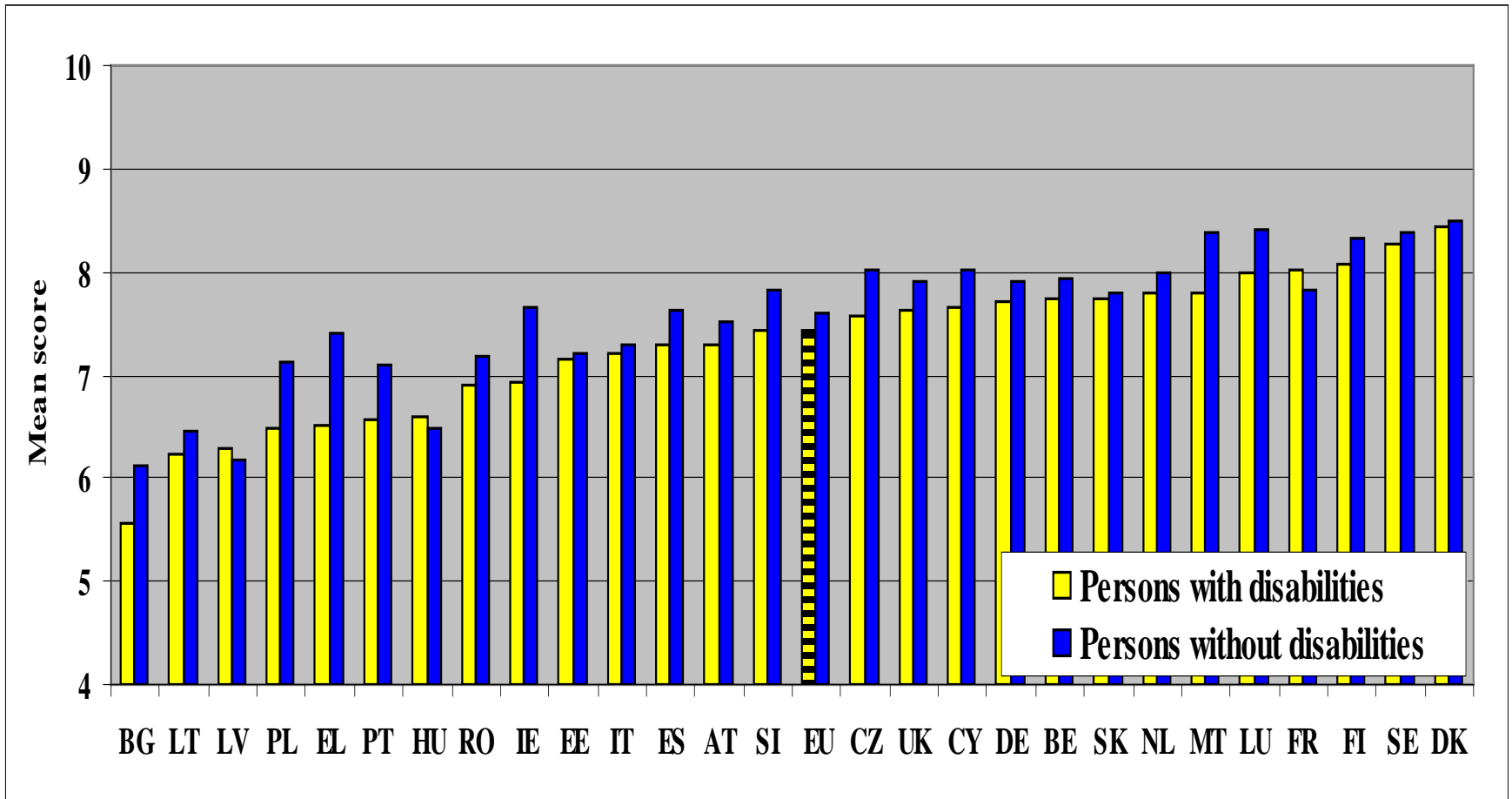


**Severe disability has a stronger negative impact compared to moderate**



# SATISFACTION WITH STANDARD OF HOUSING

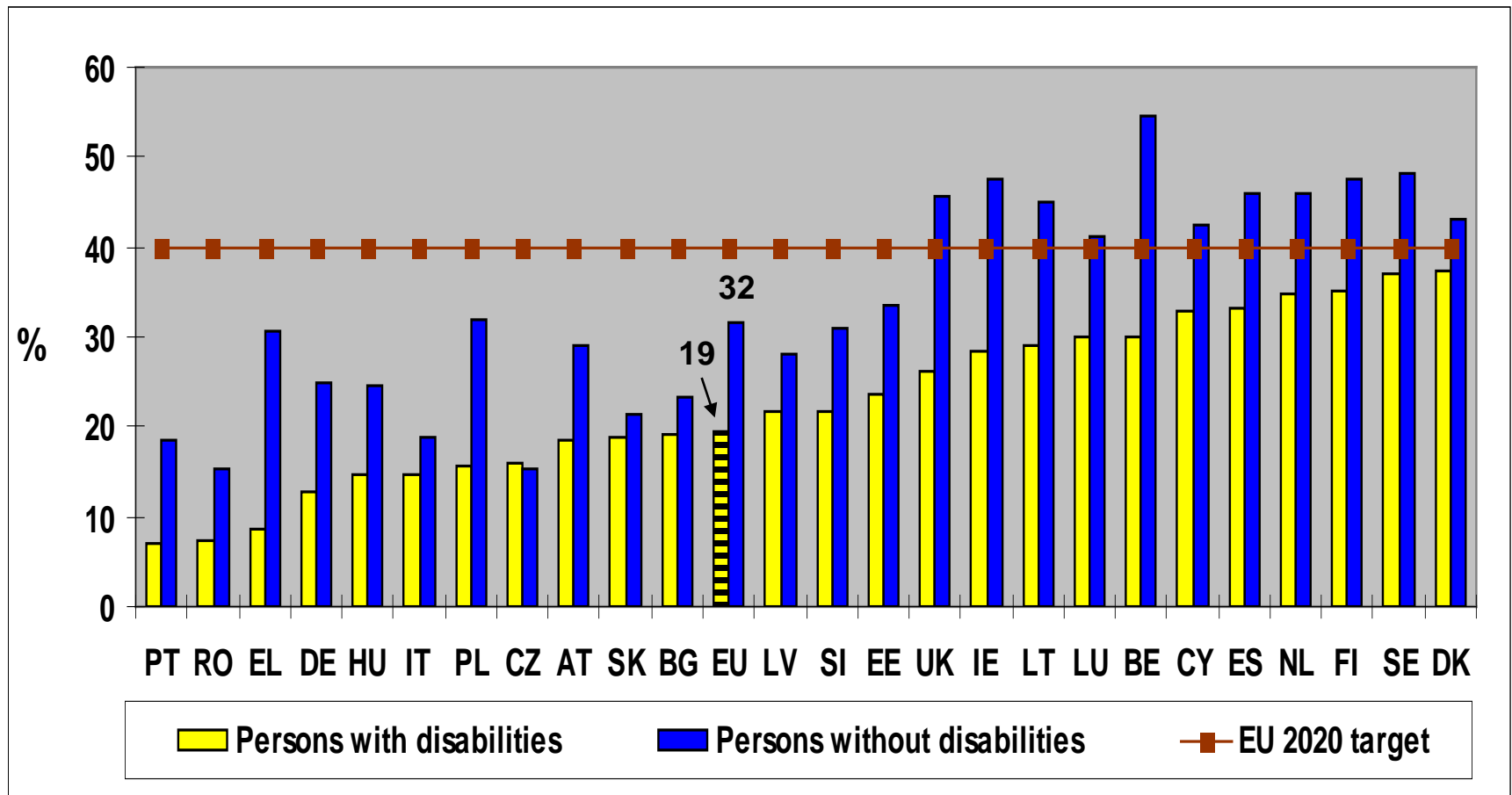
Mean score (score varies from 1 to 10). Age: 18+



**People with severe disabilities report lower levels of satisfaction**

# DISABLED PEOPLE HAVING COMPLETED TERTIARY EDUCATION

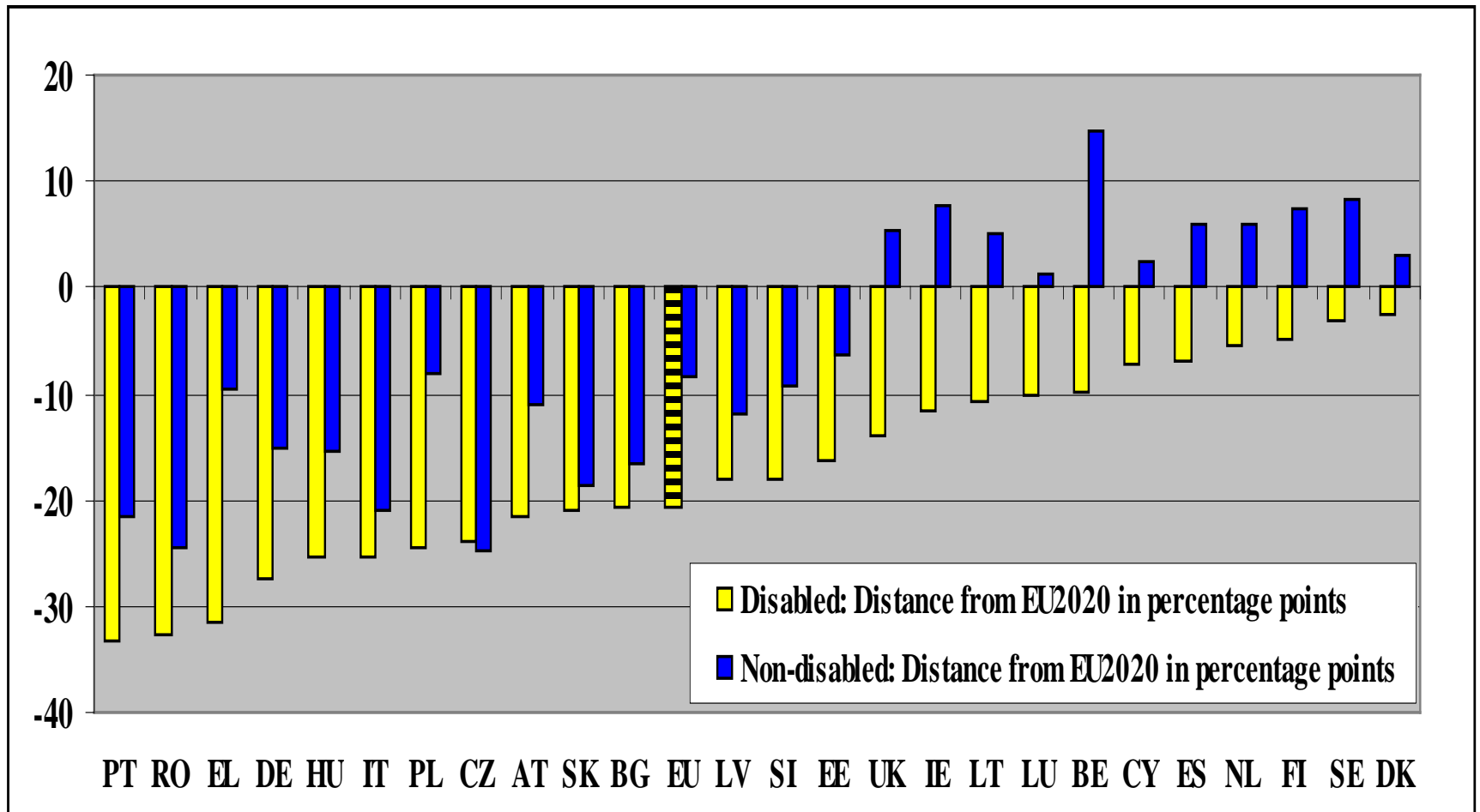
% of people who have completed a tertiary education. Age: 30-34



Europe 2020 strategy: increase the share of the 30-34 years old having completed tertiary education to at least 40% in 2020.

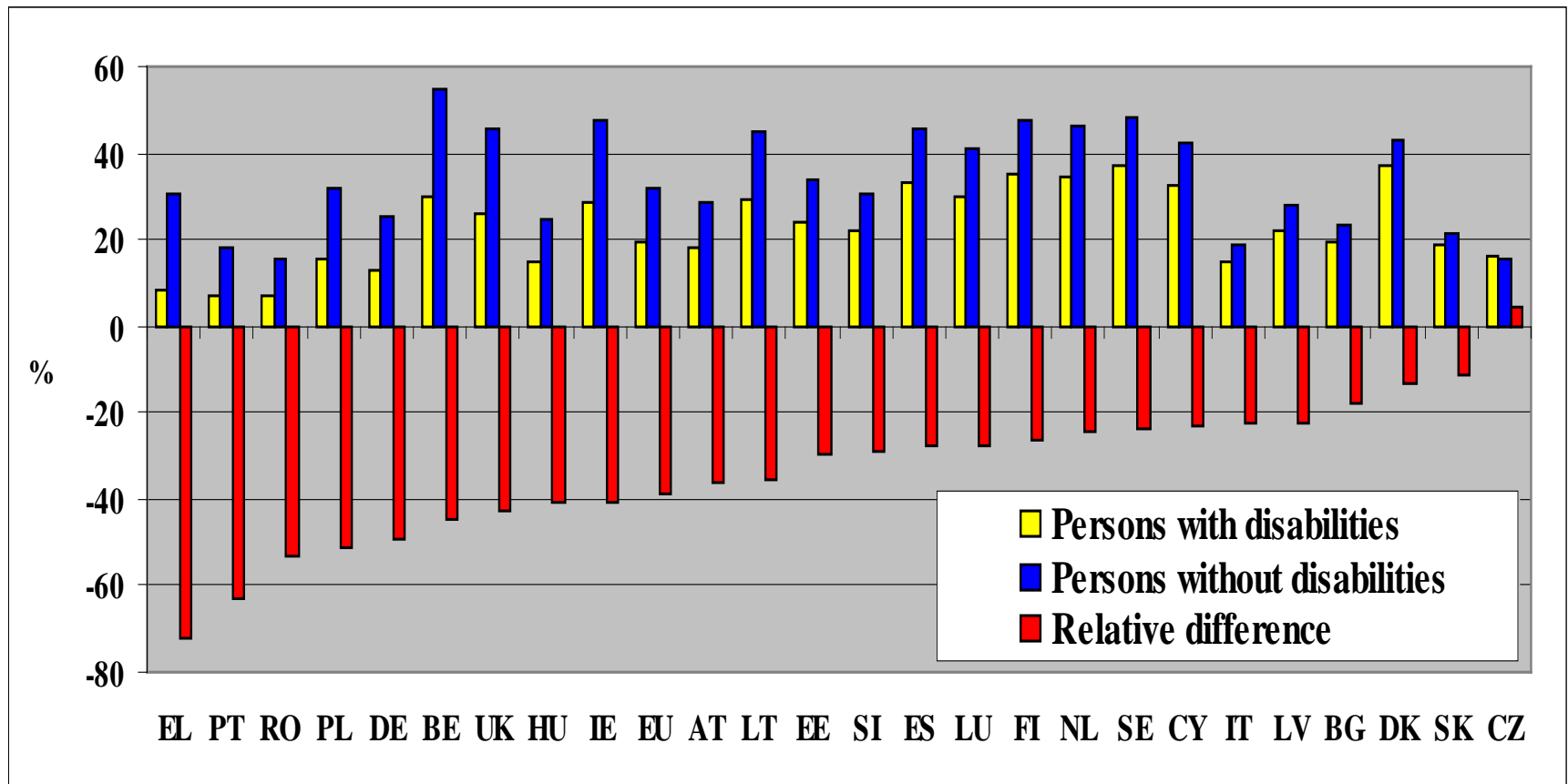
# DISABLED PEOPLE HAVING COMPLETED TERTIARY EDUCATION

Distance from EU 2020 target in percentage points. Age: 30-34



# DISABLED PEOPLE HAVING COMPLETED TERTIARY EDUCATION

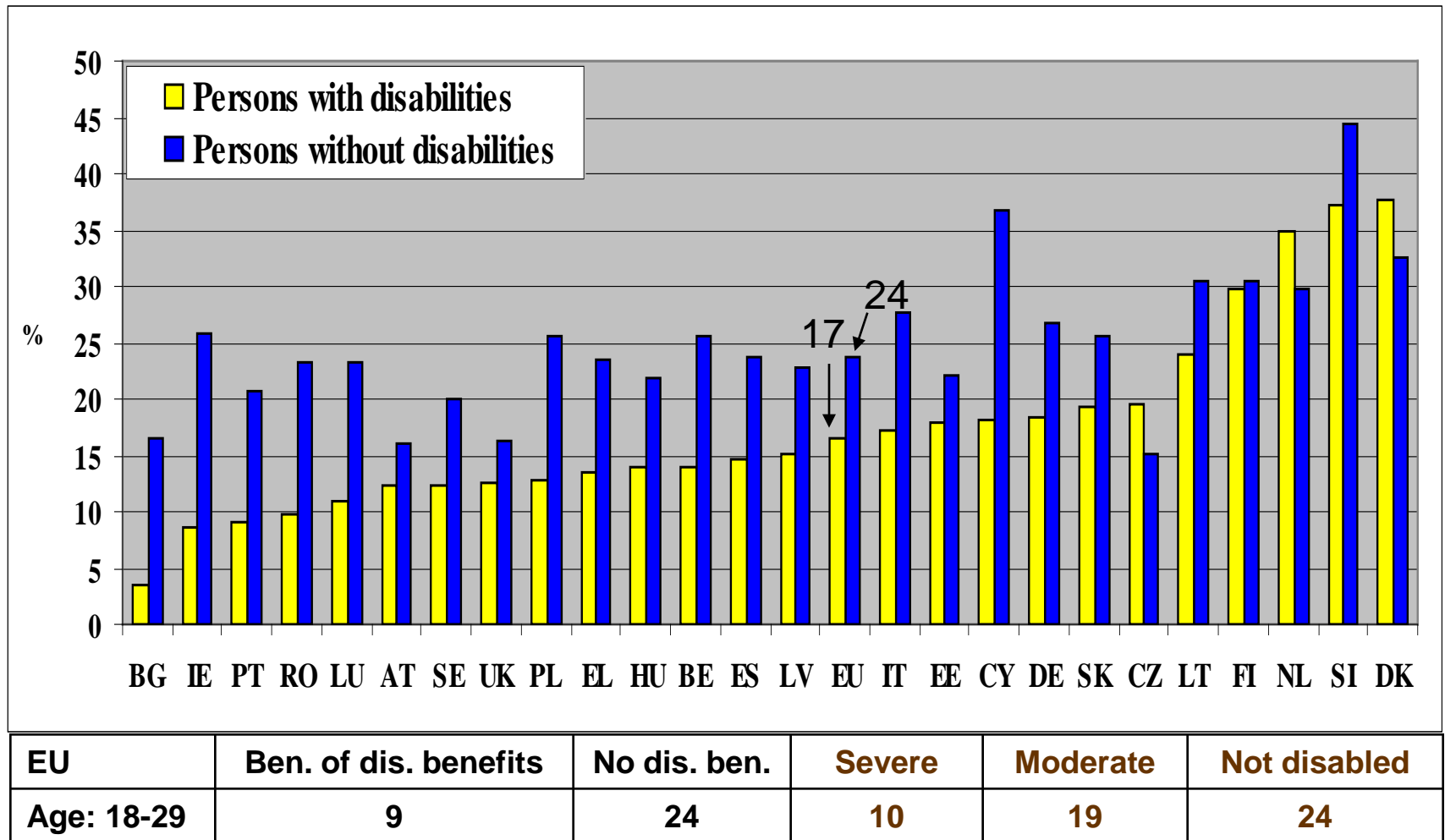
Disadvantage of disabled compared to non-disabled. Age: 30-34



$$\text{Relative difference} = 100 \times (\% \text{ of people with disabilities} - \% \text{ of people without disabilities}) / (\% \text{ of people without disabilities})$$

# DISABLED STUDENTS IN HIGHER EDUCATION

% of persons attending tertiary education. Age: 18-29



# TRANSITION FROM SCHOOL TO WORK

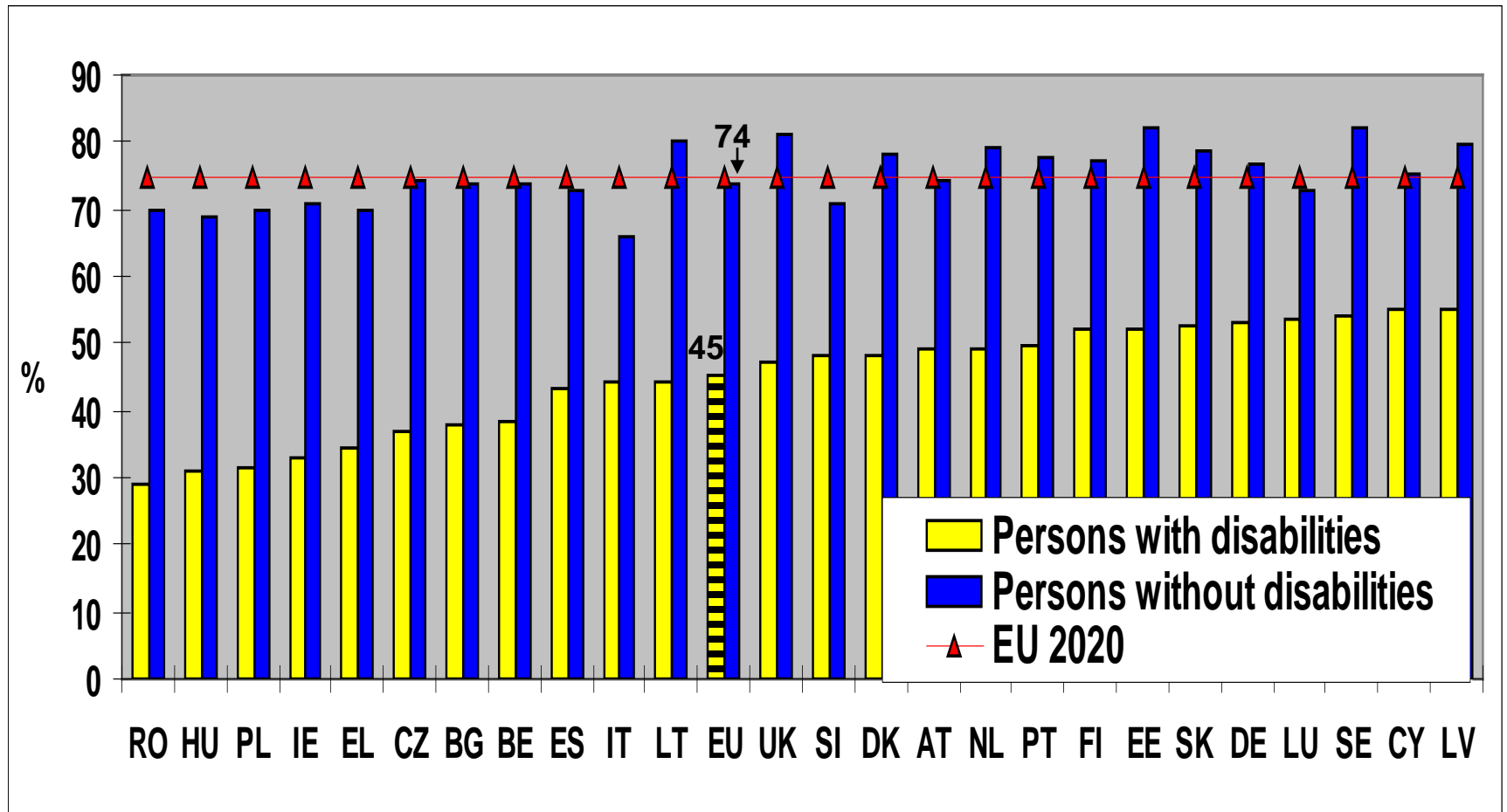
Transition probabilities. Age: 16-34

People in education in 2007

	Status in 2008				
	Employed	Unemployed	Education	Inactive	Total
<b>WOMEN</b>					
<b>with disabilities</b>	9	6	79	6	100
<b>without disabilities</b>	13	4	81	3	100
<b>MEN</b>					
<b>with disabilities</b>	11	4	78	7	100
<b>without disabilities</b>	15	4	78	3	100

# EMPLOYMENT RATE

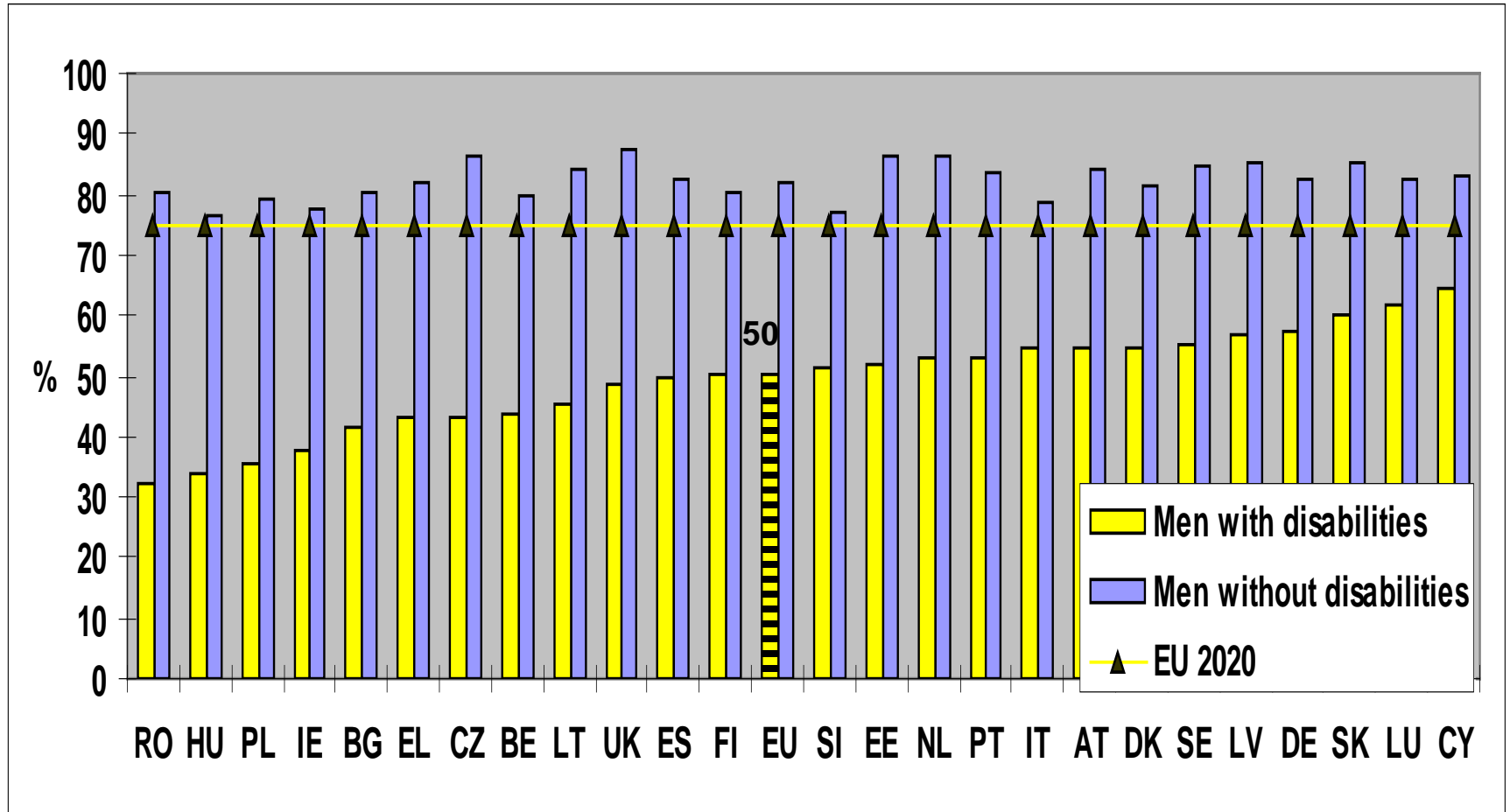
% of people aged 20-64



Europe 2020 objective requires that 75 % of the population aged 20-64 should be employed.

# EMPLOYMENT RATE

## MEN: % of men aged 20-64

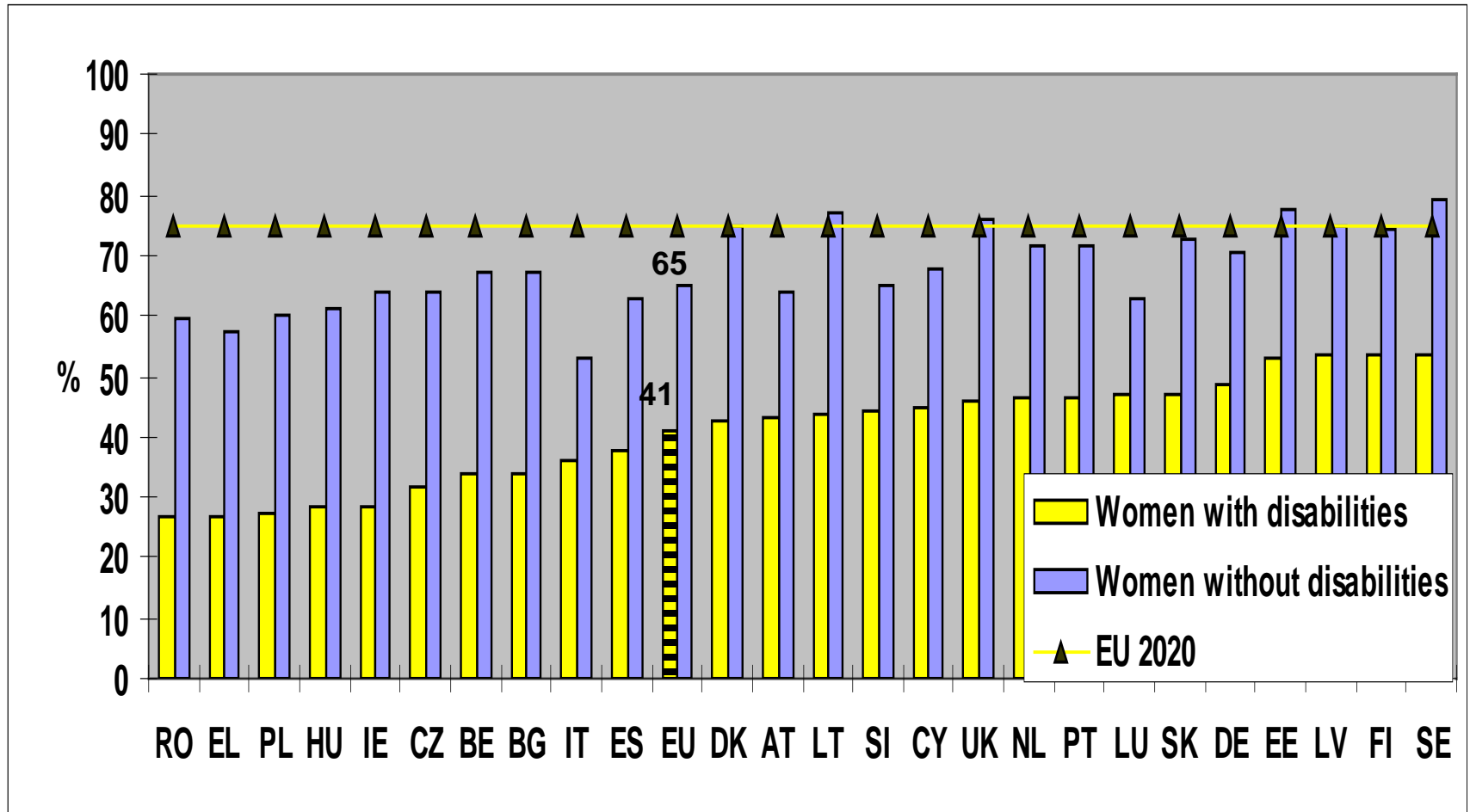


Europe 2020 objective requires that 75 % of the population aged 20-64 should be employed.



# EMPLOYMENT RATE

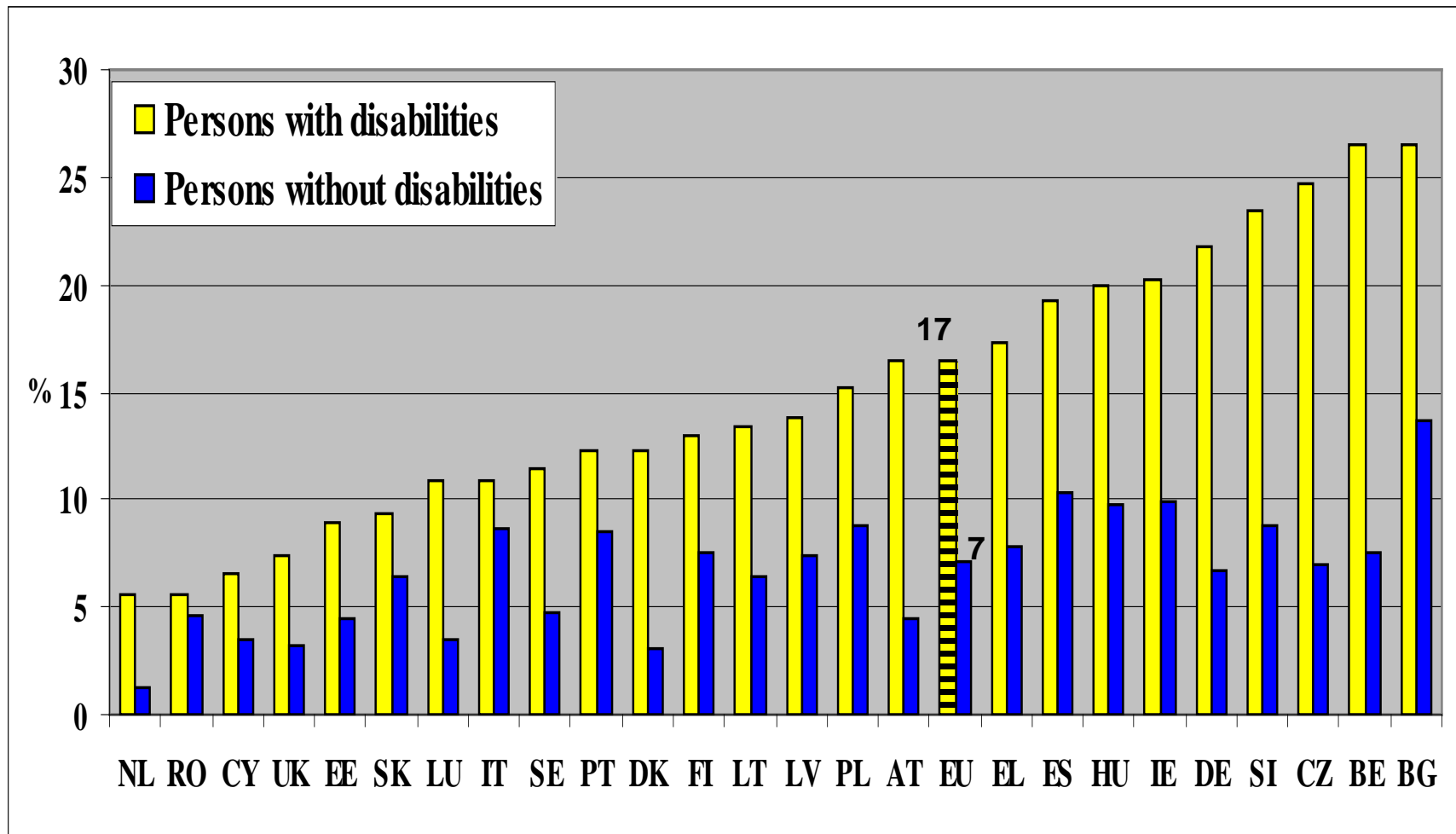
## WOMEN: % of women aged 20-64



Europe 2020 objective requires that 75 % of the population aged 20-64 should be employed.

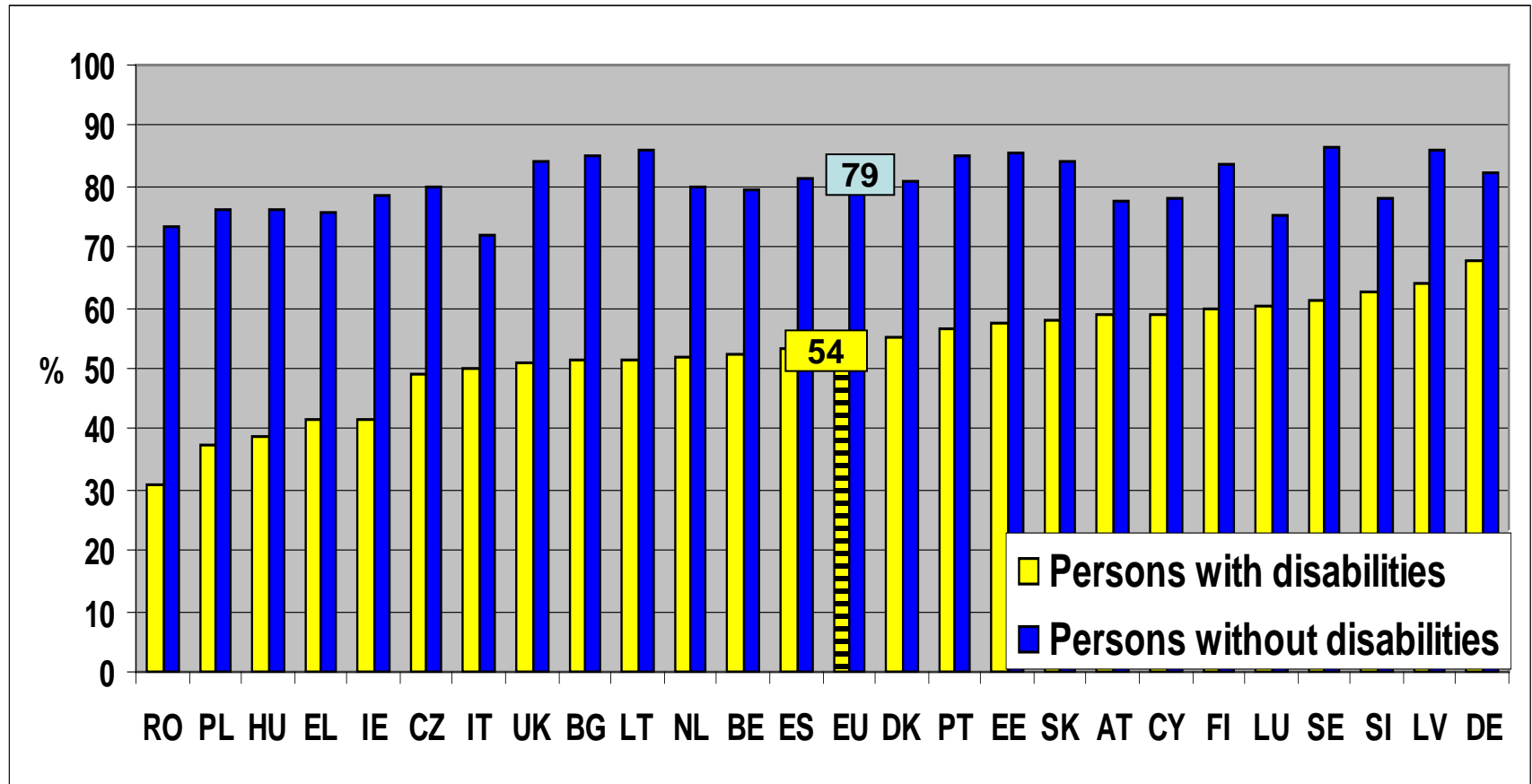
# UNEMPLOYMENT RATE

% of economically active people aged 20-64



# ACTIVITY RATE

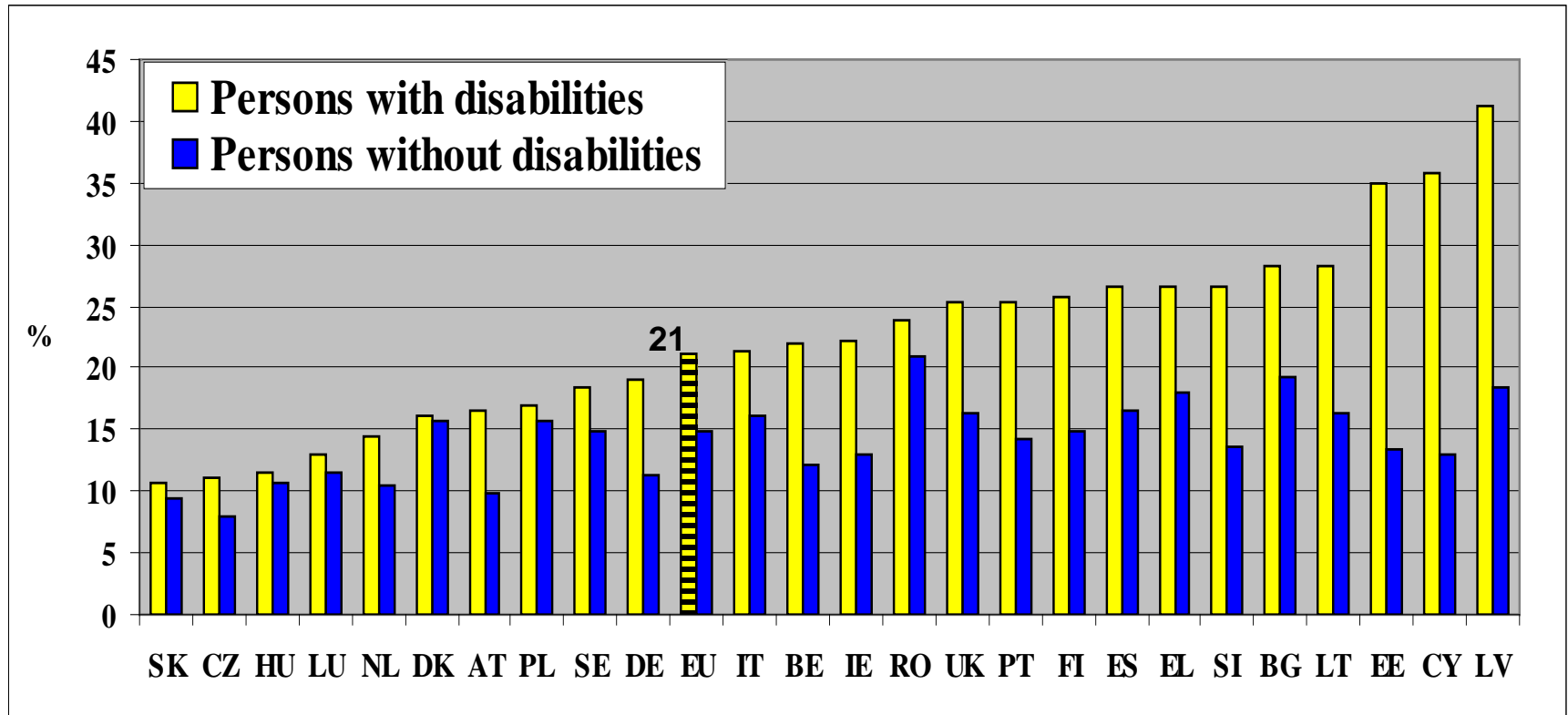
Economically active on the labour market as a % of people aged 20-64



	Women disabled	Women non dis.	Men Disabled	Men Non disabled
EU	49	71	60	88

# RISK OF POVERTY

% of people living in households with income below poverty line. Age16+

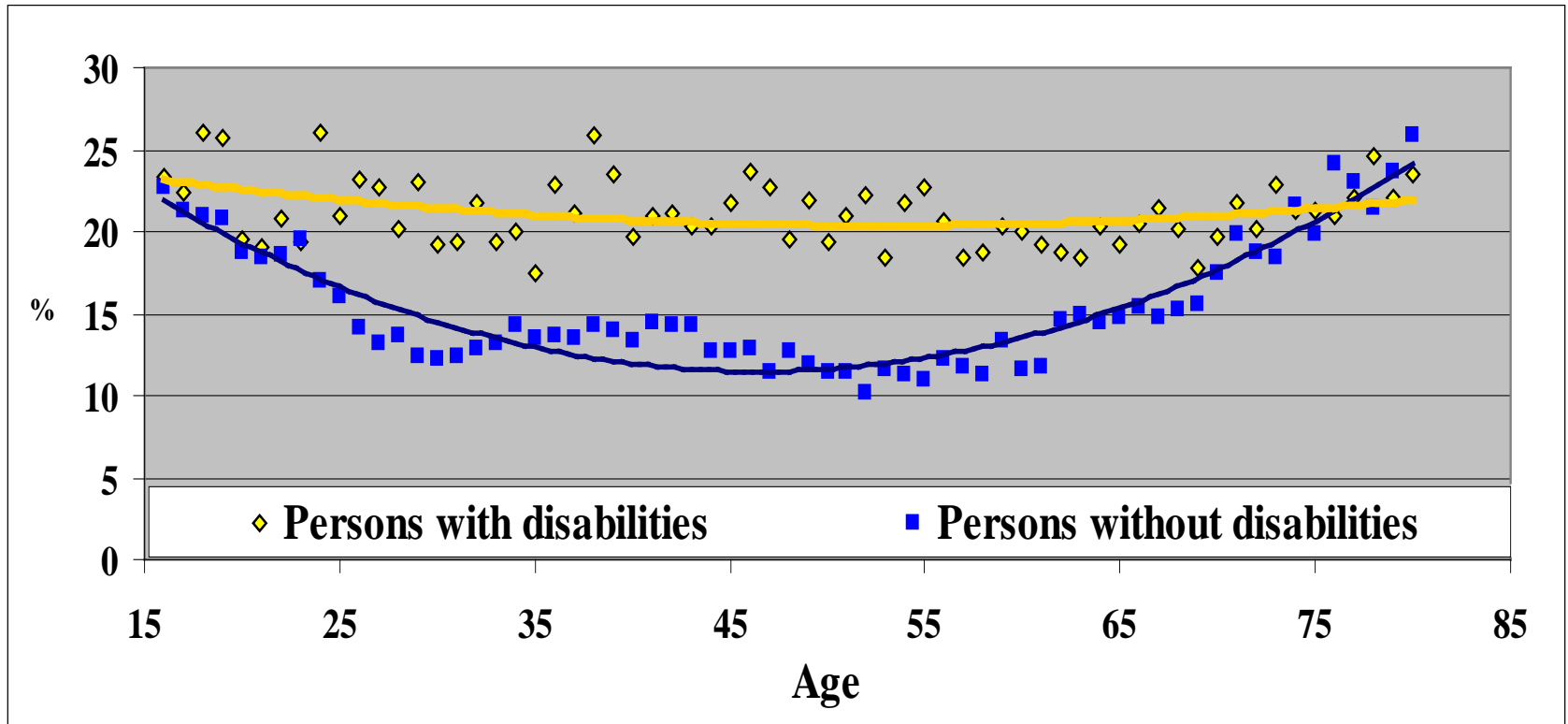


The reduction of poverty is an objective of EU 2020

Risk of poverty: if equivalised household disposable income is lower than 60% of the median national household equivalised disposable income.

# RISK OF POVERTY

Proportion of people living in households with income below national poverty line



	Women disabled	Women non disabled	Men disabled	Men non disabled
EU	22	16	20	14